



Satellite Family Child Care System

October 2023
Newsletter

A big welcome to our new Satellite Affiliate members, all with shared goal of achieving accreditation!

Larena Brown – Brown’s Kid D Kollege

Debra Raddant – Deb’s Daycare Center

Rebecca Krantz – Krantz Creative Kids

Congratulations on moving to Associate level with Satellite!

Kathleen Wolfe – Kathy’s Kids Home Child Care

Congratulations on your Reaccreditation!

Mary Laufenberg – My Second Family Family Child Care



Leonor Torres Miranda
– Mami Family Day Care



Anastasia Rodriguez – El
Principito



Erika Perez Ramirez –
Nannis Smile

LEARNING AND CONNECTING TOGETHER

Congratulations on your retirement!

Jeanette Benedict – Cuddle Bugs



Welcome Jessica

My name is Jessica Roberts, and I am Satellite's newest Accreditation Consultant. I have worked in the childcare field for over 20 years. During that time, I have held numerous positions within the world of early childhood education. My journey began as a Nutrition Service Provider in a Head start Program in 1999. From that role I moved into a Teaching Assistant where my love for all things early childhood began to blossom. I have worked for various non-profit childcare programs in Madison as a Teaching Assistant, Lead Teacher, Administrative Assistant, Assistant Site Director, Regional site supervisor, and most recently an Early Head Start Site Director. I graduated in 2014 with a bachelor's degree in psychology minoring in social work and sociology.

During my time teaching I worked with children aged from Infants all the way up to 5th grade. I have loved all the experiences I had working in childcare centers in my various roles. Every age group has offered its own unique learning experiences and amazing connections with children and families. I truly enjoy working with diverse populations. I have learned so much on my journey.

I have developed a passion for encouraging and supporting teachers on their own personal journeys in the early education field. I look forward to working with family child care providers in Wisconsin--supporting them on their own personal growth and goals while ensuring that high quality care is available in their community.

TYC

TEACHING YOUNG CHILDREN

Vol 16 No 4
Summer 2023



In The Spotlight



24

Supporting
Staff Through
Change

5

The Leader's Role

naeyc® National Association for the
Education of Young Children

Effective Preschool
Leadership and Management

Feature Teacher: Janell Moran

Honeypie Nature Playschool – Satellite Accredited Family Child Care Program

Congratulations Janell for being recognized for this incredible honor in the latest edition of NAEYC's Teaching Young Children magazine.

You can read the full article [here](#).

naeyc®

Background Noise

Relevant Satellite Accreditation Standards

III. The Daily Program for Children

F. The schedule offers a balance of activities.

1. Children, particularly the very young, are protected from noise and activity that may be over-stimulating (including music, radio, and television).

J. Computers and audio-visual media are used only when they have a clear purpose and support children's development.

3. If the provider uses "passive" media such as television, films, and video, they are used appropriately and on a limited basis, rather than as regular daily events. Other activity options are also available, and children are not required to view the program. The provider talks with the children about what they are viewing.



The Basics

What is background noise? Noise is everywhere. Adult brains are better equipped to filter out irrelevant environmental noises than the brains of young children. Background noise describes sounds unrelated to the main task at hand. Take a moment to pause and listen; maybe you hear the humming of the nearby road, a plane flying overhead, the draining of the dishwasher, or the television on in the next room. It is critical to recognize that background noise is dependent on an individual's primary focus. White noise, or a mixture of sound waves over a wide frequency range, is not considered background noise and has alternatively been shown to be helpful in increasing sleep quality.

How does it affect children's development? A young brain is still maturing in its ability to integrate and process sensory information from the world into something meaningful. Background noise has been shown to hinder the development of speech and language skills, such as word learning and discriminative listening. Research also suggests that background noise, specifically television exposure, is detrimental for young children's cognitive development when exposed during sleep and waking hours. Although it may seem young children are not attending to a television on in the background, play has been shown to be affected. Infants, toddlers, and preschoolers spend less time engaged in an activity before moving to another when in noisy environments. Background noises, particularly from television, also decrease the quality of adult interactions with children. Overall, managing exposure to unnecessary environmental noise is key to fostering optimal language and cognitive development in young children.

Background Noise (cont.)

What can I do to mitigate background noise? The first step in mitigating background noise is to identify the sources. Noise from music, radio, and television can be both an educational tool and a learning hinderance. Use these controllable noise sources when there is active engagement and with an awareness of children's developmental level. If background noise is uncontrollable, such as in programs located in busy areas, using carpet, rugs, and curtains can help absorb sound and result in a quieter environment. For more information on background noise and its influence on development, see the attached resources below.

I want to learn more!

- [Noise and its Effects on Children](#)
- [Screen-Time Recommendations For Children Under Six](#)
- [Influences Of Background Noise On Infants And Children](#)
- [Learning in Complex Environments: The Effects of Background Speech on Early Word Learning](#)
- [Does Noise Affect Learning? A Short Review on Noise Effects on Cognitive Performance in Children](#)
- [The Context of Background TV Exposure and Children's Executive Functioning](#)

SAFETY SATURDAY



- Basic Life Support CPR/AED
- Abusive Head Trauma
- Child Abuse and Neglect

- Sudden Infant Death Syndrome
- First Aid
- Fire Extinguisher Training

FREE EVENT

open to all providers and staff affiliated with Satellite Family Child Care System



Satellite Office
4709 Verona Rd
Madison, WI 53711

reach  DANE

Satellite Family Child Care System



4C Helping Communities Help Children



November 4
9 am - 5 pm

APHE Wisconsin LLC



English and Spanish



Environment, Health & Safety
Division of Facilities Planning & Management

REGISTER BY OCT 20

CLICK HERE TO REGISTER

Satellite Professional Learning Calendar 2023 - 2024

Dates	Time	Event	Location	Registration	Registry hours*
November 4	9-5 p.m.	Safety Saturday	Satellite Office	Register here! by 10/20/23	6.5/7
November 15	6-8 p.m.	Curriculum Philosophy Series – part 1: Children as the Co-Constructors of Their Own Learning: Emergent Curriculum in Family Child Care	Zoom	Register here! by 11/13/23	2
January 24	6-8 p.m.	Curriculum Philosophy Series – part 2: Fostering True Play in Your Program: AnjiPlay in Family Child Care	Zoom	Register here! by 1/22/24	2
February 21	6-8 p.m.	Curriculum Philosophy Series – part 3: Nurturing Children’s Imagination: Waldorf in Family Child Care	Zoom	Register here! by 2/19/24	2
March 20	6-8 p.m.	Curriculum Philosophy Series – part 4: Building Children’s Independence: Montessori in Family Child Care	Zoom	Register here! by 3/18/24	2
April 17	6-8 p.m.	Curriculum Philosophy Series – part 5: Children as Naturalists: Forest School in Family Child Care	Zoom	Register here! by 4/15/24	2

Obtaining Registry Credit* for Satellite’s Virtual (Zoom) Professional Development Sessions

To receive Registry credit at the conclusion of virtual (Zoom) professional development, follow these steps:

1. Each participant must register individually even if viewing the training with other participants on the same screen.
2. You must be present for the entire session. Late arrivals may not be admitted.
3. At the conclusion of the session, you complete an evaluation and then enter your information to receive Registry credit. This must be completed at the end of the session or your professional development hours will not be entered into the Registry by Satellite Family Child Care System. **

You can view and print your proof of attendance through your [Wisconsin Registry](#) account. It may take several weeks before your attendance is entered into the Registry. Certificates of completion will not be mailed or emailed to participants.

**If you do not complete the steps above and wish to receive professional development credit for a Satellite event that you attended, you will need to complete the DCF form “Continuing Education Record—Independent Reading/Video Viewing “ found here: <https://dcf.wisconsin.gov/cclicensing/ccformspubs>

Satellite's Mentorship Program



Satellite Family Child Care System is pleased to announce that we are revitalizing our mentorship program piloted late last year! This program connects experienced Satellite family child care providers, mentors who will be invited to participate, with those who are searching for guidance on the complex inner workings of family child care. This is a voluntary opportunity for professional growth and personal connection!

If you are interested in becoming a mentee, meaning you will be paired with a mentor identified by the Satellite team, [please take this survey!](#)

Do you have information to share with our community?

Submissions of the following are welcome:

- Photos and video of your program or an activity (be certain you have photo release forms on file)
- Program news
- Events connected with your program
- Celebration of educational milestones, like the completion of a degree or credential
- Awards received

Submit items for the newsletter to Laura Simkin: lsimkin@reachdane.org

Submissions may be edited and/or adjusted for length.

LEARNING AND CONNECTING TOGETHER

Loan Equipment and Curriculum Units

Satellite members have full access to Satellite's equipment and curriculum units. Check the link below regularly to view our full lending options. When you sign up for equipment and units, your consultant will inform you of whether the item is available immediately or if you're on the waitlist.

Pick-up and drop-off of equipment and units occurs during consultant visits to your program. Additional exchanges of equipment and units may occur at the Satellite office. Communicate with your accreditation consultant to determine a day and time when Satellite staff are present.

Satellite Equipment, Units and Book Loans

Toddler Dress Up Center



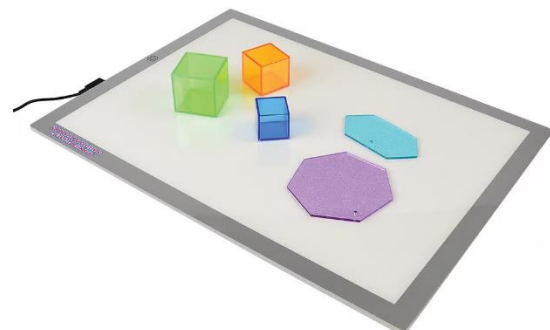
Preschool Woodcrest Chair

Toddler Cubbies



Preschool Bookshelf

Table Top Light Panel



LEARNING AND CONNECTING TOGETHER

New & Updated Curriculum Units
[Link to Unit and Equipment List](#)

Dollhouse and Accessories



Grocery Store



The Five Senses



Space Exploration



LEARNING AND CONNECTING TOGETHER

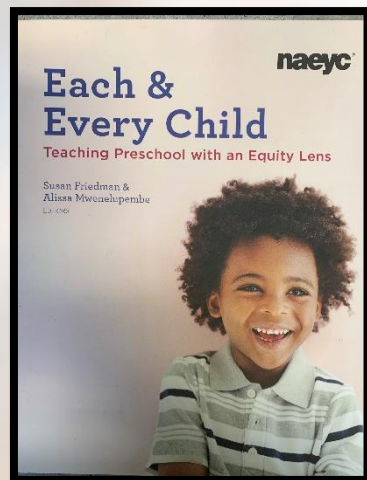
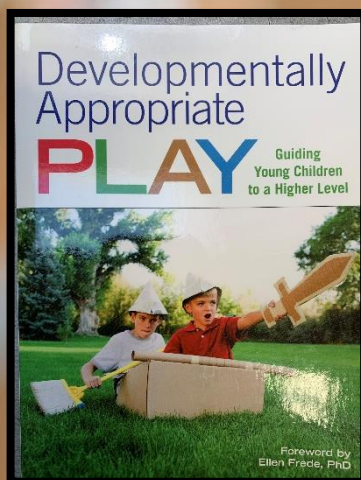
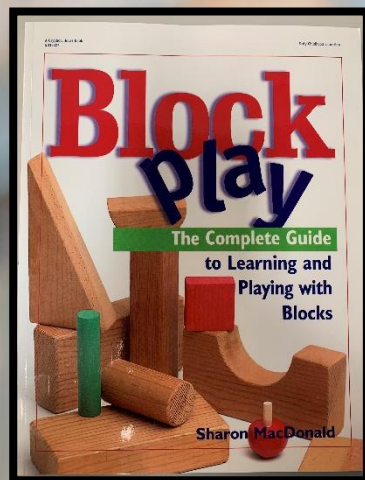
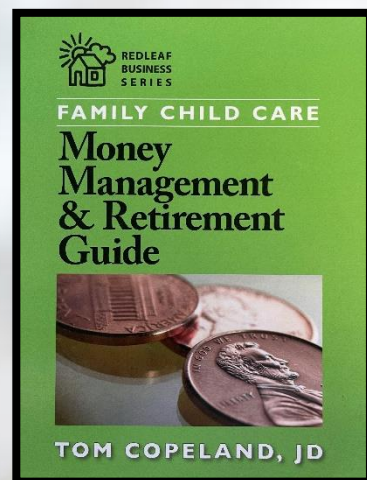
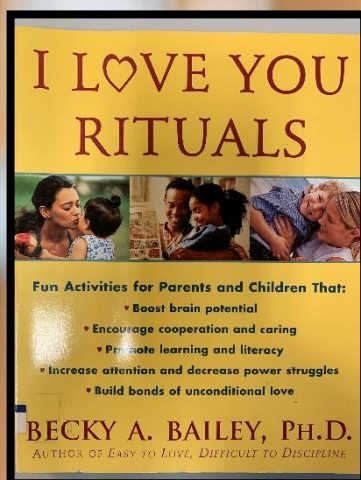
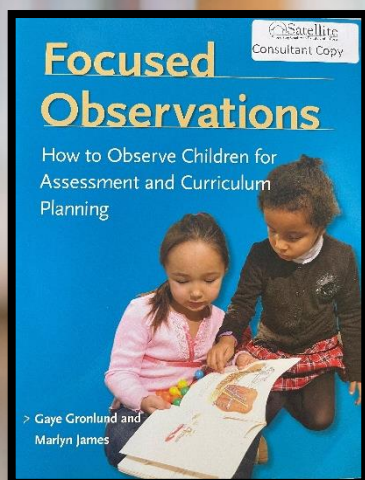
EARLY CHILDHOOD EDUCATOR RESOURCE LIBRARY

100+ books

Satellite members have full access to Satellite's early childhood educator resource books. Check the link below to view our full lending options.

[Satellite Equipment, Units and Book Loans](#)

When you choose a book, your consultant will inform you of whether the item is available immediately or if you're on the waiting list.



Public Health
MADISON & DANE COUNTY

Your Fall 2023 COVID Cheat Sheet

Like the last few years, we anticipate seeing an increase in COVID-19 infections over the fall and winter months. We pulled together a cheat sheet with links to resources, so you know where to go if you need to stock up on rapid tests, what to do if you're sick or exposed, and where to find answers to some common COVID questions. Find the cheat sheet [here](#).



Wisconsin Department of
Children and Families



Child care programs that have a positive case, staff and/or child, are required to report the case to their local health department and licensing specialist.

- [DCF COVID-19 Child Care Information for Providers](#)
- [CDC Operational Guidance for Early Care and Education Programs](#)

For Dane County Providers:

What You Need to Report

- Per the DCF rules, you are required to send COVID-19 case information.
- You do NOT need to report cases resulting solely from a positive at-home test. These are not considered a Category 1 reportable condition.

How to Report

To fulfill DCF's licensing requirements for COVID-19 reporting, [please use this link](#) to send confirmed COVID-19 case information for your facility. If you enter your email in the form, you should receive a confirmation message from us verifying your submission.

Paperwork, Paperwork, Paperwork!

There is a lot of documentation to keep track of. Become familiar with Satellite's documentation requirements:

<i>Document</i>	<i>Frequency</i>
<input type="checkbox"/> Health report and TB test	Complete within 1 year of enrollment, before reaching associate status
<input type="checkbox"/> Home Safety Checklist	4 times per year. Providers begin quarterly checks on this list when they become an affiliate provider. All items must be met before accreditation and consistently thereafter.
<input type="checkbox"/> Liability Insurance	Submit annually upon reaching associate status
<input type="checkbox"/> Car Insurance	Submit annually if transporting children
<input type="checkbox"/> Quarterly survey	4 times per year for those in and around Dane County.
<input type="checkbox"/> Animal vaccinations	Submit annually (if applicable)
<input type="checkbox"/> Confidentiality release (information exchange between program and Satellite consultant)	All newly enrolled children in program-or-included in program's policies
<input type="checkbox"/> Continuing Education Record	20 hours annually
<input type="checkbox"/> Mandated Reporter Training	Every 2 years
<input type="checkbox"/> CPR	Every 1 or 2 years (depends on expiration date on CPR card)
<input type="checkbox"/> Program Policies	Reviewed with each (re)accreditation
<input type="checkbox"/> Parent/Provider contract	Reviewed with each (re)accreditation

Big Changes Coming to Wisconsin Shares Oct. 1!

Starting on Oct. 1, Wisconsin Shares will be issued on a part-time or full-time basis instead of being based on hourly attendance. We think this is a helpful change for everyone. There will be no adjustment to how parents request authorizations or receive funds. For more information, check out the [Wisconsin Shares Policy Changes website](#).

Registration fee amounts can be inputted into the provider portal starting now and parents can begin requesting funds to cover this fee as of Oct. 1. Be sure that you have registration fees up to date in the Provider Portal. Parents with authorizations will be able to receive funds to pay provider registration fees up to \$125 twice in a 12-month period. Note: Starting Dec. 1, any registration fee changes must be reported to your local agency before parents receive these funds.



Professional Resources

Satellite Services

- [Mentor Program](#)
- [Satellite new member application](#)
- [Resource loans—equipment, curriculum units, & resource books](#)

reachDANE

Satellite Family Child Care System

Wisconsin

- [T.E.A.C.H. Scholarship Program](#)
- [REWARD Stipend Program](#)
- [Wisconsin Early Childhood Shared Services Network \(WEESN\)](#)
- [The Wisconsin Registry](#)
- [Educator Assistance Program](#)
- [Child Care Forms and Publications \(Licensing\)](#)
- [YoungStar Connect](#)
- [Early Childhood Mental Health Consultation](#)



Professional Organizations focused only on Family Child Care

- [Wisconsin Family Child Care Association](#)
- [Home Grown](#)
- [National Association for Family Child Care](#)



The October Financial Wellness session is:

Money Convos for Happy Relationships! Finances are an important part of any relationship. Learn how to engage in honest, open conversations to set financial priorities together. From discovering your money personality to understanding your financial big picture, our tips and tools will help you navigate choices and create an action plan that helps you work together to achieve your goals.

Live Session: 10/11 @ 11:30 AM [Link to Register!](#)

(Use “Reach Dane” as the organization with whom you’re affiliated)

A special message from DCF Secretary Emilie Amundson regarding Sept 20 Special Session

Last month, Governor Evers called the State Legislature [into a special session to address the state's chronic workforce challenges](#), including access to quality, affordable child care. Yesterday, the Legislature convened and opened the special session. While no action was taken, the session remains open – meaning the chance to ensure Wisconsin's early care and education industry remains stable is still on the table.

What you are doing is working. Your stories are being heard, both here in Wisconsin and across the nation, and making legislators take pause. It is critical, perhaps now more than ever, that you continue to share your story over the coming days. Whether that be with elected officials, the families you serve, or your community, your voice matters in helping get meaningful legislation and funding across the finish line.

On behalf of myself and Governor Evers, I want to say thank you. As we have visited programs over these last several months, we have seen firsthand the amazing work you are doing with our littlest learners. We have also seen and heard about the daily challenges you are facing with hiring and retaining staff and doing everything within your power to not raise your tuition rates and price families out of care.

Please know that Governor Evers and I remain committed to working across the aisle to build an early care and education system that not only supports all Wisconsin families, but also the workforce behind it.

Emilie Amundson
Secretary

weca Wisconsin Early
Childhood Association

[Early Childhood Workforce Support and Resources](#)

 Raising
Wisconsin

[Wisconsin State Budget Advocacy](#)

OUR COMMUNITY

Join the Community

Satellite Family Child Care Circle

A virtual space for Satellite family child care providers to connect, learn, and share. This group is only for providers affiliated with Satellite Family Child Care System. We want this to be your space to share ideas, photos, activities, and more!

For more information, please contact:



Grace Eilers

geilers@reachdane.org

(608) 400-2823



Noche Latina

A monthly event for Spanish speaking, Satellite affiliated family child care providers and their families held at Satellite's office. Noche Latina focuses on building a network of supportive relationships among Latina providers and their families. We also have a lot of fun!

For more information, please contact:



Estella Vargas

evargas@reachdane.org

(608) 852-7724



OUR COMMUNITY

Satellite believes in the power of community. Consider attending a family child care provider-led group affiliated with Satellite. Participation in all support groups is a benefit of Satellite and completely voluntary.

Arcoiris

The purpose of the Arcoiris support group is to provide meetings with child care providers. The goal of the Arcoiris support group is to share resources with each provider who attends the meetings. There is no cost to the Arcoiris support group for providers who want to attend. Meetings are the third Friday of every month from 6:30-8:30 pm. Meetings are usually at a Madison-area provider's home, but can also be at a restaurant, park, library, etc. For the meeting, each provider is invited to bring a dish, dessert, or drink to share. During the meeting, the food that has been provided is shared. Ideas, resources, situations are also shared and new providers who are attending the meeting are introduced. The Arcoiris support group maintains confidentiality inside and outside the meetings of all topics discussed. This group is conducted in Spanish.

For more information, please contact:



Margarita Ugalde

ugaldemargarita7@gmail.com

Sojourn

Sojourn is a community of accredited family child care professionals who empower one another to reach their own unique potential through person connections, reflective process, and shared leadership. We strive for a balance between personal and professional issues in our discussions. We use a shared leadership model for Sojourn meetings which allows each member to grow and participate in various roles. Join Sojourn to build relationships with other professional child care providers, experience professional growth through group process responsibilities, and participate in discussion about family child care issues. This group is conducted in English and meets in the Madison area.

For more information, please contact:



Shannon Davis

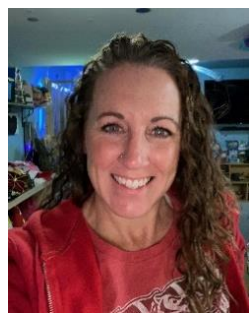
badgerclan2@gmail.com

Chris Torres

rctorres8881@gmail.com



SATELLITE ADVISORY COMMITTEE



Shannon Davis

Advisory Committee Member
Accredited Family Child Care Provider

Mykenzie Lerg

Advisory Committee Secretary
Satellite Consultant
(608) 843-5378
mlemberger@reachdane.org



Tammy Ocampo

Advisory Committee Member
Community Member with the
Madison Public Library
Former Satellite parent



Fernanda Leporace

Advisory Committee Member
Community Member with
WECA
Former Accredited Provider

Satellite Advisory Committee

Satellite deeply values input from those within the family child care community.

At each Advisory Committee meeting, the facilitator presents information about Satellite's support services and/or accreditation and then asks committee members related open-ended questions. Committee members are encouraged to use their unique backgrounds, personal and professional roles, and experiences as they share their perceptions and ideas.

Satellite's facilitator actively listens with the goal of utilizing committee members' expertise and experiences to strengthen the Satellite Family Child Care System.



Nancy Rosales

Advisory Committee Member
Accredited Family Child Care Provider

Laura Simkin

Advisory Committee Facilitator
Satellite Associate Director
(608) 381-2676
lsimkin@reachdane.org



Terri Lynn Alexander

Advisory Committee Member
Accredited Family Child Care Provider

Abby Abrisham

Advisory Committee Member
Retired Satellite Accredited
Family Child Care Provider



Maria Luisa Mas

Advisory Committee Member
Accredited Family Child Care Provider

SATELLITE STAFF



Estella Vargas

Accreditation Consultant
Bilingual (Spanish/English)
(608) 852-7724
evargas@reachdane.org



Amy Christianson

Language Access, Curriculum, and
Satellite Director
achristianson@reachdane.org



Jen Jorgensen

Accreditation Consultant
(608) 416-9531
jjorgensen@reachdane.org



Laura Simkin

Satellite Associate Director
(608) 381-2676
lsimkin@reachdane.org
*Contact Laura with all general questions
related to accreditation and Satellite services.*



Rachel Halstead

Accreditation Consultant
(608) 690-0174
rhastead@reachdane.org



Grace Eilers

Family Child Care Content Specialist
(608) 400-2823
geilers@reachdane.org

Jessica Roberts

Accreditation Consultant
(608) 416-3996
jroberts@reachdane.org



Mykenzie Lerg (Lemberger)

Accreditation Consultant
(608) 843-5378
mlderg@reachdane.org

CONFIDENTIALITY

Satellite staff keep confidential within Satellite your program's information that you share with your accreditation consultant, the Satellite director and associate director. This information is documented in records of contact that only Satellite's staff access. Satellite's team works together, harnessing our collective skills and knowledge to support your program.

Need assistance? Contact us so we can help!

Satellite
(608) 275-6740

satellitefcc@reachdane.org

Mailing and drop-off address:
2096 Red Arrow Trail, Fitchburg, WI 53711

*Label mailed and dropped off items with "attention:
Satellite" & and the Satellite staff person's name*